

# ТА ЖИЗНЬ ПРОШЛА

Из вокальной поэмы „КРУГ“

Стихи А. БЛОКА

**Presto**

*p*

Та

*pp*

Detailed description: This system contains the first four measures of the piece. The vocal line (treble clef) has a whole rest for the first three measures and a half note 'Та' in the fourth measure, marked with a piano (*p*) dynamic. The piano accompaniment (grand staff) consists of a rhythmic pattern of eighth notes in both hands, starting with a piano-pianissimo (*pp*) dynamic. The key signature is two sharps (F# and C#) and the time signature is 2/4.

жизнь про -

Detailed description: This system contains measures 5-8. The vocal line (treble clef) has a melodic line for the first three measures, followed by a half note 'про -' in the fourth measure. The piano accompaniment (grand staff) continues with the eighth-note rhythmic pattern. The key signature and time signature remain the same.

- шла,

и

Detailed description: This system contains measures 9-12. The vocal line (treble clef) has a melodic line for the first three measures, followed by a half note '- шла,' in the fourth measure, and a whole note 'и' in the fifth measure. The piano accompaniment (grand staff) continues with the eighth-note rhythmic pattern. The key signature and time signature remain the same.

сердце спит, утомле

- но. И

ночь о

- пять пришла, бес

— страш — на — я — гля —

— дит в мо — е ок —

— но.

*mf*

и вы —

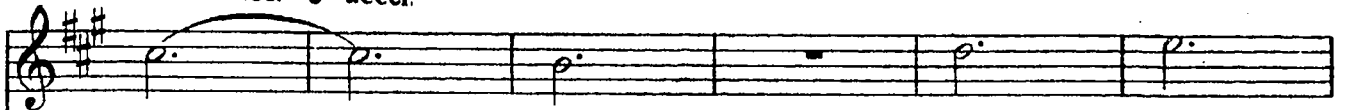
*pp*

— пал снег, и не про —

— гнать мне зим — них чар... И не вер —

— нуть тех нег, и

*cresc. e accel.*



стран — но вспо — ми —

8



*rit. molto*



— нать, что



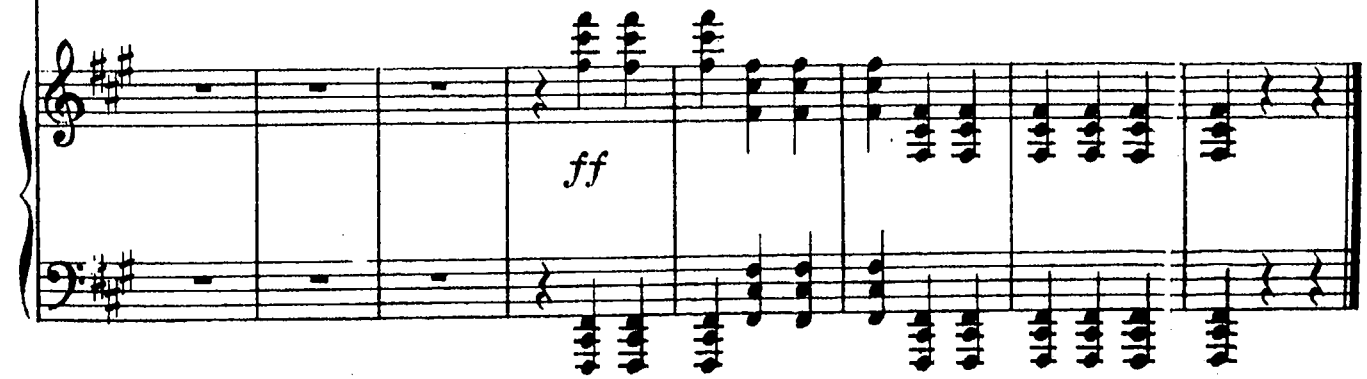
*a tempo*

*cresc.*

*f*



был по — жар.



*ff*